

Romsey Golf Club

Women's Report

Monday 19th May: Was the pennant finals but we missed out making them. Some thought this was lucky as they weren't ready for match play finals. Well done to Hidden Valley who won our division, after being runners-up for many years.

Tuesday 20th May was the Trentham Plate. Kath, Lorraine and Wendy enjoyed a great day. Although we weren't among the winners we enjoyed the lunch

Wednesday 21st May was the second round of the Club Championships. We played in fine conditions with the course starting to dry out again. Beryl was the daily winner 92/23/69.

Wednesday 28th May was yet another stroke round, this time finishing the championships. With some occasional fine mist and cooler weather most players seemed to struggle. Leila was the only player who played well 108/31/77 so was the winner of the May Monthly Medal. Congratulations to Beryl who won the Club Championship and Leila who won the Nett Championship. After the golf we had a sumptuous lunch to celebrate in the clubrooms. The club seems to have some natural fertilisation happening with lots of evidence of roo poo (acceptable but not dog poo) around the course.

It's a long way to Strathbogie but Kath, Lorraine and Beryl made the trip, leaving in the dark and returning home again in the dark. Their course was in great condition and the unseasonal May weather continued. (Who would believe we were playing in short sleeves in the end of May?) Despite the top conditions most of the field found the going very heavy and this was reflected in the overall scores. Good company and good food made the journey worthwhile as was the very occasional good hit.

Saturday 31st May was the Romsey Tournament 4BBB. See the men's report for write up as the women were well represented.

Wednesday 4th June was a fine sunny day to play Stableford.

The course is in great condition and it was great to have Colleen back on the golf course. Leila won the day with 29 points. Lorraine and Kath played at Bacchus March West on Thurs 5th for Captain and Presidents Day. They enjoyed playing Irish Stableford.

Wed 11th June was Stroke and Silver Spoon play off and the first round of the singles knock out. The day was chilly but we beat the rain. The fairways are great but we did have to fill in a lot of divots left by other players!!! 1st in Silver Spoon was Wendy 119/39/80. Good luck in the Golf Vic final, Wendy, at Sanctuary Lakes.

Denise, Kath and Lorraine travelled to Avenel on Thursday June 12th. It was a difficult course for the whole field but again the lunch was terrific.

Tis month's recipe:

Beef Macaroni

250g Macaroni

2 onions chopped

1 green capsicum diced

125g bacon pieces(optional)

500g minced steak

440g can tomato soup & 1/2 can of water

1 beef stock cube

1-2 teasp mixed herbs

Salt and pepper to taste

Cook macaroni as per directions on the packet.

Saute the bacon.

Add onions and capsicum for 2 mins.

Add mince and cook till well browned.

Add soup, water, crumbled stock cube and mixed herbs.

Season with salt and pepper. Cover and simmer for about 20 mins.

Add macaroni and heat through

Beryl Cole

Romsey Dental

FAMILY DENTAL CARE

03 5429 3322

NOW OPEN

Affordable Family Dentistry

Cosmetic Dentistry

Root Canal Treatment

Mouthguards

Dentures

Tooth Whitening

Veterans Affairs

Teen Dental Vouchers

WITH NO OUT OF POCKET EXPENSES

www.romseydental.com.au

99 Main Street, Romsey
at the Romsey Medical Centre

2014 WOODEND CHILDREN'S Festival

SUNDAY 27th JULY

BUFFALO STADIUM ~ 10AM - 3PM

PUPPET MAKING • DANCE
CIRCUS TRICKS • ECO-FRIENDLY CRAFTING
ORIGAMI • PLANTING • SCULPTURE
AFRICAN DRUMMING • MAGICIANS
DIDGERIDOO DEMONSTRATIONS • WEAVING
PUPPET SHOWS • STORY-TELLING
MUSICAL PERFORMANCES

program & tickets | woodendchildrensfestival.com.au

ARTS VICTORIA | Macedon Ranges Shire Council | Romsey Primary School

THE ROMSEY RAG

Issue No. 327 2070 copies produced each month at Romsey Primary School as a service to our community and proudly supported by the Macedon Ranges Shire Council

July 2014

THE JULY EDITION OF THE ROMSEY RAG IS PROUDLY BROUGHT TO YOU BY

- BOC Gases -

BOC

Gas Agent

BOC would like to announce
that Romsey Engineering
is now an authorised
BOC gas agent



ROMSEY
ENGINEERING
SERVICES P/L

ACN: 151 842 607

8 Mitchell Crt

Romsey 3434

PO BOX 407

Romsey VIC 3434

Ph: 03 5429 5653

Fax: 03 5429 6315

E:sales@romseyengineering.com.au

www.romseyengineering.com.au

WE KEEP YOUR COGS MOVING

The closing date for copy for the August 2014 edition of the Rag is July 15th. We cannot guarantee inclusion of copy received after this date.

Please email your copy to the Romsey Rag email address: romseyrag@romseyps.vic.edu.au

We require submissions to be in Word document format, and for graphics to be in Jpeg format, as we cannot guarantee that we can open or print other formats.

Please also ensure that you have permission to use photographs of people included with your article.

THE ROMSEY RAG IS PROUDLY PRODUCED AT ROMSEY PRIMARY SCHOOL AS A COMMUNITY SERVICE

Editorially Speaking

Romsey Rag Editorial Committee:

Joan Gibbs, Robyn Moore

Layout and Design:

Robyn Moore, Gillian Gorrie

Printing:

Robyn Moore, Colin Miller

Accounts

Bernie Carter / Kylie Pyne

Advertising /Sponsorship:

Romsey Primary School 5429 5099

Collation Team Co-ordinator:

Joan Sparkes—5429 5848

Contributions:

Articles should be left at the Romsey Post Office (fax 5429 5134) or Romsey Primary School by 12 noon on the 15th of the month.

We prefer articles to be submitted electronically or on disc. Legible typed or handwritten items may be accepted. All material submitted for publication must be named and have contact details.

Articles can be sent via e-mail to: romseyrag@romsey.ps.vic.edu.au

Please ensure that any text is sent as word documents and logos / photos are sent as .jpg files.

Views expressed are not necessarily those of the Editorial Committee. All contributions remain the responsibility of the author.

Advertising:

Rates are GST inclusive.

Front page sponsorship: \$150

Business card: \$30 per issue

\$240 per year in Business Directory

Quarter page: \$60 per issue

Half page: \$110 per issue

Full page: \$200 per issue

Line ads: e.g.- For sale, births, deaths, marriages, engagements - \$15

For invoicing please include name & address details.

Cheques must be made payable to Romsey Primary School Station Street, ROMSEY 3434

Distribution:

2070 copies delivered to the Romsey community at the commencement of each month.



Macedon Ranges Shire Council - Generous supporters of the Romsey Rag

Romsey Rag Publication Deadlines 2014

Edition	Closing Date for Copy	Collating Date
August 2014	Tuesday July 15th	Thursday July 31st
September 2014	Friday August 15th	Thursday August 28th
October 2014	Wednesday September 10th	Thursday September 25th
November 2014	Wednesday October 15th	Thursday October 30th
December 2014	Saturday November 15th	Thursday November 27th



Macedon Ranges
Shire Council

Proposed gym extension at the Romsey Recreation Centre

Council is proposing to convert the existing squash courts at the Romsey Recreation Centre into additional gym space.

Residents and users of the centre are invited to complete a survey to determine the level of need for additional fitness facilities and the impact of the proposal on current user groups.

The survey is available online at mrsc.vic.gov.au/yoursay or in person at the Romsey Service Centre, Romsey Recreation Centre and the Kyneton Toyota Sports and Aquatic Centre.

The survey closes on Sunday 13 July 2014.

Feedback received will be considered by Council at a Council meeting later this year and all participants notified of the outcome.

Dog Owners Please Be Responsible!

As a parent who recently attended the interschool sports day at Romsey Primary School I was very impressed with the whole program. However, the day was spoilt by the amount of dog poo on the new sports oval, that the kids had to dodge all day.

By all means walk your dogs—it's good for them and good for you, but also do the right thing. By law you are required to pick up after your dogs, and it is not fair to other users of these facilities when you can't be bothered.

I can't help but wonder what other visitors were thinking about this.

Name and address supplied.

“ATTENTION CITY COMMUTERS”

The Lancefield Romsey Commuter Bus offers a Mon-Fri return service direct to the CBD at the cheapest rate available in the shire.

Only \$45.00 per week for permanent travelers.

We also cater for casual & adhoc travelers.

Departs Lancefield General Store 6.35am, & Romsey Hotel 6.40am, arrives CBD 7.40am

Departs Cnr William & Latrobe Sts 5.20pm, arrives back in Romsey 6.20pm & Lancefield 6.25pm

Seats currently available.

Please contact **Maree Lawson 54292027**



Romsey Golf Club – Men's Report

<http://romseygolfclub.net>

Saturday June 14th - Quarter Finals 4BBB & par

Light drizzle was falling as the players took to the course, within a few minutes the rain strengthened and the umbrellas and wet weather gear came out. The rain kept up for almost an hour then the sun poked through and the afternoon improved considerably. The course was very wet and balls picked up mud after almost every shot so "Preferred Lies (Handspan) - Through the green" was applied. The colder air and the soft fairways again saw many players well short of their usual driving distance making approach shots all the more difficult. The greens continue to hold well although a few were quite wet causing balls to stop exactly where they landed leaving many golfers with much longer putts. On a wet afternoon the results were;

Par Competition; **Winner** - Mal Mottram (13) +2 from Ron Walker (20) -1

NTPs went to 15th - Wayne Robb, 16th Les Gaunt

Ampol/W E Tom 4BBB Quarter Final results were;

1. Bob McLennan/Mal Mottram - Walkover
2. Andrew Laing/John Moody **D** Les Gaunt/Neil Jarman - 4/3
3. Anthony Lakey/Steve Poulton **D** Tony Freeman/Dave Muller - 6/5
4. Pat Chisholm/Jim Patton **D** John Laing/Mick Nicholls - 8/7

Saturday June 7th - Ampol/W E Tom 4BBB Shield - Qualifying Round - Stableford - Top 8

Works to remove dead/dangerous trees and limbs saw a number of spaces along some fairways, a few, more open, tees and greens and some track marks across a few fairways so it was quite a different course to that of the previous weekend. Ongoing rains and warmish winter days again saw steady growth and good cover across the course. The afternoon's colder air and the softer fairways saw all players lose distance however the greens held well so players could confidently aim directly at the flags. Later in the day a southerly wind blew up and rain began to fall. On a testing day the results were;

Winners; Bob McLennan (11)/Mal Mottram (14) - 42 pts from Tony Freeman (18)/Dave Muller (13) - 41 pts and Andrew Laing (18)/John Moody (12) 40 pts.

NTPs went to; 1st - Neil Jarman & 15th - Mal Mottram

The quarter finals of the Ampol/W E Tom 4BBB will be

1. Bob McLennan/Mal Mottram Vs Walkover
2. Andrew Laing/John Moody Vs Les Gaunt/Neil Jarman
3. Tony Freeman/Dave Muller Vs Anthony Lakey/Steve Poulton
4. John Laing/Mick Nicholls Vs Pat Chisholm/Jim Patton

Saturday May 24th - Monthly Medal - Stroke & Putts

After five warm, clear days and some rain late the week there was again good growth across the course. The rain saw the fairways softening however there was not enough to put any water into the course's two dams. The softer fairways and the cooler air saw players needing to think carefully when selecting clubs for their approach shots or risk falling well short of the green. Friday's rain and the overnight's heavy dew also saw a number of greens very soft so usually good chip shots often stopped dead where they landed causing more than a little angst with some players. As the round proceeded the sun shone and the afternoon blossomed so, on a beautiful late autumn day on a tough little course, the results were;

Winner and May Medalist; Dave Muller - 85/13/72 from Les Gaunt 79/6/73

NTPs; 15th - John Moody (Got the \$100 jackpot too!) & 16th - Rob Rea.

Least Putts - Dave Muller - 25

Congratulations also to Andrew Laing and John Freestone who took out Lancefield Golf Club's 4BBB event with 46 pts. Ron Walker and Mick Nicholls also performed well with 40 pts.

Golf Club memberships are now due. For the 3rd year RGC has not changed membership fees.

The fee structure for the season 2014 - 2015 is as follows.

Adult: \$350

Family: \$550 - Two adults & two children under 18 or two adults.

Seniors \$240 - 65 yrs and over.

Affiliate: \$240 - If a member of another Golf Club.

Junior: \$75 - Yr 9 to Yr 12 or a full time student.

Six Months: \$175 -Any consecutive six months.

Practice: \$100 Use of the course for practice – **Please use a sand bucket.**

Cadet: \$10 - Yr 4 to Yr 8.

City/Country8 \$150 – Members who live at least 45K Km from Romsey but who wish to hold a GolfLink Handicap. These members may play up to eight competitions at RGC before playing full membership.

Macedon Ranges Masonic Lodge
73 Main St,
Romsey VIC 3434
Contact us at:
Ph: 5428 5418 or 5429 6354
email: muddy27@bigpond.com
Macedon Ranges Masonic Lodge

**Meets 1st Thursday except January
Installation - June**

ALL BRETHREN WELCOME

- 2 FOR 1 OFFER -
Buy one pancake stack with ice cream
get one free*

SAVE \$9.50

Not valid in conjunction with any other offer

CAFE VENTO
3 / 41 High St
Wallan Vic
5783 3524

WALLDER'S CAFE
30A Sydney St
Kilmore
5781 1828

Open 7 Days

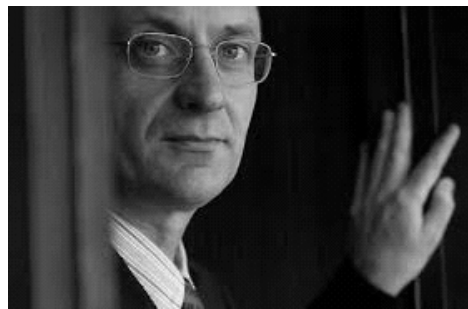
* Not valid on Mother's Day or Father's Day.
Not valid in conjunction with any other offer, special or coffee card.
Limited to one per table or group.



<http://www.romsey.org.au>

RRBATA 2014 Business Breakfast

Friday 1st August, 2014
7.00am (Breakfast served at 7.30am)
**Carriage House Restaurant,
 Cleveland Winery**
55 Shannons Road, Lancefield



Guest Speaker:

Mr. David Errington
Managing Director, Australian & Asian Equity Research
Head of Consumer Research for Australia and Asia
Merrill Lynch Australia

In 2009, David Errington was named 'Asia Moneys' top Australian analyst and his team was voted the top in consumer goods and the retail sector. David continues to be top rated in his sectors in the Asia Pacific region. He is the yardstick for other analysts and corporates alike.

David holds a Master of Commerce Degree from Melbourne University and has been with Merrill Lynch (McIntoch) for 23 years. David has kindly agreed to present his unique insight into consumer retail, including the wine beverage sectors, to the Annual RRBATA Business Breakfast.

This is a very special opportunity not to be missed by those with an interest in the retail sector.

Romsy Primary school student Charli attended the play "Go Away Mr Worrythoughts" at the Kyneton Town Hall recently. Sponsored by the Bendigo Bank, Cobaw Community Health and Macedon Ranges Shire Council, the play is aimed at primary school age children dealing with anxiety. Since attending the play Charli's mother Nicole says that it has helped her daughter deal with her anxieties especially since the fires earlier this year.



Increased support for Macedon Ranges Libraries

Member for Northern Victoria Region, Mrs Amanda Millar MP has welcomed the Coalition State Government delivering record funding in 2014/2015 for Victoria's rural and regional libraries.

In the Macedon Ranges, the Goldfields Library Corporation, which includes the local libraries in Gisborne, Kyneton, Romsey and Woodend, will receive \$1,227,765.

The Victorian Coalition Government has adjusted the formula for Victoria's Public Libraries Funding Program to ensure a fairer distribution of \$39.52 million for Victoria's 54 public libraries and library corporations. This means that rural and regional libraries will receive more than 50% of the increase for 2014/2015.

Mrs Millar said, "I am delighted that Minister Tim Bull has acted to ensure that we are getting the balance right by increasing rural and regional Victoria's share of the funding from 11.6 per cent to 51 per cent".

"Local libraries play a vitally important part in rural and regional communities – ensuring locals have access to resources and information not otherwise available in many homes," said Mrs Millar.

Mrs Donna Petrovich, Liberal Candidate for Macedon, said, "Locals in the Macedon Ranges will be delighted by this increase in funding for the Goldfields Library Corporation which includes our much loved and very popular local libraries in Gisborne, Kyneton, Romsey and Woodend. The additional funding will support our libraries in the great range of services and programs which they provide to our communities."

More than 98 per cent of Victorian libraries will enjoy funding increases, while 2013 funding levels will be maintained for the remaining 2 per cent.



Romsey A BIG Week in Sport

This year for the first time the Cobaw District Winter Sports Day was held at Romsey Primary School and the Romsey Recreation Reserve. It was a wonderful success, with 12 other schools participating in the t-ball, netball and football competitions. Our ovals, netball courts and gym were buzzing with children playing sport! Congratulations to our teams who were the overall champions in the football, mixed netball and girl's t-ball. From all reports from visiting teachers and spectators, everyone was impressed with the school and community's facilities. We look forward to the district association considering a change of venue to Romsey for the summer sports.



*At left:
Our boy's T-Ball team*



*Below:
Our mixed netball team in action.
They will now go on to the Divisional Championship later in the year along with our football team.*

Congratulations to all of our teams for their excellent effort and sportsmanship.

Aerobics

After intensive training our aerobics teams recently competed at Ivanhoe Grammar with excellent results. For many of the girls, this was their first taste of competition, and their results are a real credit to their dedication and effort. This year Jacinta Hipwell has taken over the coaching of this group and is supported by Lauren Pincini. The mini trio of Grace Sharp, Jess Summers and Emily Muir came first; level 3 junior pair of Madisyn Wilson and Tayla Christian came third, level 3 junior team Kayleigh Horan, Georgia Maloney and Sarah Galea came second and level 3 junior team of Libby Quigley, Lydia Woolley, Alice Quigley and Tarnee Hammond came 5th.



*All of our aerobics girls are winners!
Above: The Junior Group and Junior Pair.*



Mini-Trio first place winners Grace, Jess and Emily.



Above: Level 3 Junior Group.

ROMSEY PRIMARY SCHOOL NEWS

Region Cross Country

We had 6 students who reached the regional cross country event. They travelled to St Arnaud and represented the school to a high level. Congratulations to Lilly Bromley who finished 11th at the Region Cross Country Championships and now progresses onto the State Championships and to Liam Muir, Libby Quigley, Emily Holland, Gaby Gabranis and Alice Quigley who qualified for this event.



Our regional cross country athletes.



Above: Bunnings staff helping in the veggie garden.

Below: The presentation at the opening of the new Bunnings store in Sunbury.



working together. Lily and Noah made excellent acceptance speeches and enjoyed the opportunity to collect the autographs of Brendan Goddard and Dustin Fletcher. The evening concluded with a roast lamb meal.

Out and About with Year 1 and 2

Over the past term the year 1/2 classes have had the inquiry focus of "Backyard Safari". Student have been investigating bugs and insects and been supported by their senior buddy class to complete PowerPoint presentations. This unit culminated with an excursion to Melbourne to see two movies at the IMAX theatre on bugs and butterflies. Students also loved seeing the displays at the Melbourne Museum on insects, and various other animals.



CyberSafety

We believe it is really important for students to be safe online and recently held a Cybersafety presentation for families of senior students. Often students can be ahead of parents and we engaged Annie Rowlands from Macedon Ranges Shire Council to keep our parents well informed

As part of a 200 store network nationwide, Lee's Carpet Court can help you choose the perfect flooring and window solutions for your home & business.

82 Sydney St, Kilmore
 Ph: 5782 1788
www.carpetcourt.com.au

AUSTRALIA'S LARGEST FLOORING RETAILER

carpet • timber • vinyl • bamboo • laminate • blinds • overlocking

LEE'S CARPET COURT

FLOORING CENTRE


AN ANIMATED FILM SOCIETY

Melbournian Adam Elliott made his mark in the world of clay-mation pictures in 2004 with his short film, Harvie Krumpet, winning the Oscar for Best Short Animated Film. He and his producer Melanie Coombs then decided on a full-length feature. This film, Mary and Max, was screened at the MRFS at its June meeting. The film was five years in the making and this touching tale of two lonely people who become penpals - 8 year old Mary living in Melbourne and 44 year old Max living in New York - showcases yet again the talent of this very creative director/producer team.

On July 9th, members will be treated to a classic with the screening of The Third Man, a 1949 film from director Carol Reed with screenplay by Graham Greene. Starring Orson Welles and Joseph Cotten, we follow in the footsteps of novelist Holly Martins as he travels to post-war Vienna where a flourishing black market operates. His ex-school friend, Harry Lime, has offered him a job but Martins finds that Lime has died in unusual circumstances and decides to investigate.

The Macedon Ranges Film Society meets on the second Wednesday of every month at 7 p.m. in the Woodend Community Centre. Film notes are provided and for those who wish, there is supper, kindly supplied by members, following the screening. Enquiries about membership must first be made by emailing mrffilmsociety@gmail.com or by phoning Lorraine on 5427 0921 or Christine on 5429 5452.





make me healthy
creating a healthier you.

Cooking with REAL FOODS

Healthy Cooking Class **PART 2**

During Emilie's Cooking with Real Foods cooking class you will learn how to prepare super healthy & tasty snacks/meals the whole family will love. You will learn how to include more fruit & vegetables, wholegrains and superfoods into your diet and how to eliminate packet foods from your pantry.


Emilie will educate and inspire you to start cooking with REAL FOODS full of goodness.

Come hungry as you sample lots of delicious foods!

Date: Saturday July 12th Time: 12noon
Location: Lancefield Guest House Price: \$40

For bookings please call 0402442262 or email info@mmhealthy.com

mmhealthy.com





Have your say on our region's unique features

Throughout July, Council is seeking community comment on a draft planning statement which will recognise the Macedon Ranges as an area of special significance in state-level planning policy. The draft statement will be available on Council's website, mrsc.vic.gov.au/planning-statement, and in Council service centres for one month from early July.

Once adopted by Council, the statement will form part of Victorian Government policy within the Macedon Ranges Planning Scheme, and will guide planning decisions into the future.

Council would like to thank the large number of community members who provided input into the draft through an online survey in May/June, which received over 1100 responses.

The findings from the survey and other consultation activities will be made available to the community over the coming months.

Council is keen to keep residents involved in this process and present a policy to the Victorian Government that gives everyone confidence in the future management of our valued spaces.

It is expected that Council will consider the final statement with any community comments at its September meeting.

For more information, contact Council's Strategic Planning and Environment unit on 5422 0333 or via strategic



make me healthy
Creating a healthier you.

Improve your health naturally

Emilie is a qualified and passionate naturopath who will provide you with the knowledge and essential tools you need to improve your health and wellbeing. Emilie works with clients of all ages including babies and children and can help you with any health concern you may have. Natural medicine improves your health from the inside out and is the perfect way to boost your vitality.

Ideal for those;

- Wanting to lose weight or detox
- Suffering from anxiety or depression
- Planning a pregnancy or currently pregnant
- Or just wanting to improve your general health

Emilie stocks a large range of health products including, vitamins, herbs, superfoods, protein powders and bulk organic nuts/seeds as well as chemical free cleaning products and skincare. For more enquires call or email Em.

To make an appointment or for more information please contact Em;

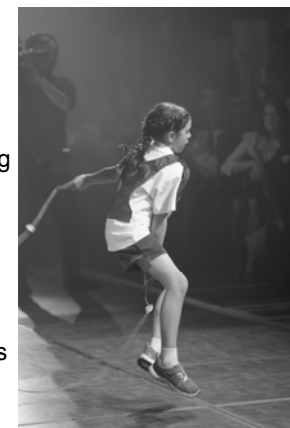
Phone: 0402 442 262
Email: emilie_naturopath@hotmail.com
www.mmhealthy.com

Hesket Primary School Performs for the Victorian Education Excellence Awards

Hesket Primary School has had a Jump Rope for Heart demonstration skipping team for 23 years. Over that time they have represented the National Heart Foundation and their school at many performances. These have included being on Channel 9's Good Morning Show, numerous public performances and visiting many other schools. After being seen skipping at the Victorian Sports Awards the school was approached



by Neill Gladwin (producer of the State Schools Spectacular) to include the team in the 2013 production. This was an amazing experience for the team and they were delighted to again be asked to perform at the 2014 State Schools Spectacular. This year's show is being held at Hisense Arena on Saturday 13th September. The team is already working on their routine for this event. The team was recently asked to entertain the crowd at this year's Victorian Education Excellence Awards. The awards ceremony was held at Crown's Palladium Room on Friday 16th May. The team consists of 8 children aged between 8 and 11. This talented group trains hard to improve their skills and teamwork while having lots of fun and being extremely fit. Hesket Primary School is very proud of their team's achievements.



DISPLAY EXHIBITORS WANTED



Romsey Neighbourhood House and the
Romsey Mechanics Institute are proud
to present this major event



Antique Collectables Display with an Appraiser on site

Do you have a collection of antique, retro or
vintage pieces that you would like to display?

Here is your opportunity to show it all off at this new format event.



Sunday 9th November

9am till 4pm

You can reserve a site for no cost

Limited Kids Collectables sites are also available

Public Admission will be by gold coin donation

Contact Gail Middleton on 0416 028219 by

31st by August 2014 to reserve a site.



INTRODUCING SHOU MEI SUMARAC

Shou Mei was born in a remote mountain village in the north of Taiwan. Whilst studying English language in Taichung, by chance she walked by a gallery where an artist was working in the window. Mesmerized by his work she used to gaze at him until one day they finally exchanged smiles. Shou Mei, dreaming she could paint like him, walked by for the next few months until she plucked up the courage to step inside the gallery. During this first conversation they realised that they came from a very similar poor village background. On subsequent meetings, realising Shou Mei could speak a little English, they agreed that she would translate for his American and British customers that frequented his gallery in exchange for painting lessons. He would allow her to sit next to him and he would instruct her in his techniques. After six months he gave her a blank canvas and urged her to begin painting. She asked if could she copy one of his paintings, her favourite being an autumn forest scene. This was to become her first work.

Too embarrassed to be seen, she painted in the back room and after six attempts both were satisfied with her first painting (this painting will be exhibited). The artist that mentored Shou Mei for two years is non-other than Wong Shong Kwan who later became the most famous and celebrated artist in Taiwan. All his paintings are now collector's items. Shou Mei will have two of his original paintings on display at Wu Lin Retreat for her inaugural exhibition.

Shou Mei came to Australia in 1976 and continued to paint on and off in her spare time. Her favourite subjects are Australian rural scenery and classical Chinese style. In this exhibition "IMAGES FROM TWO WORLDS" she will display a blend of Australian/European and Chinese works dating from as far back as 1975 to the present.

The Exhibition will be at Wu Lin Retreat, Sherwood Court, Lancefield in January 2015 where she lives with husband James. Entertainment will include music by local musicians, a variety of local Macedon Ranges wines and Tai Chi demonstrations.

Exhibition Date: Sunday 18th January 2015

Time: 1pm – 5pm

At: Wu Lin Retreat, Sherwood Crt Lancefield

Proceeds from the sale of all artworks will go to Shou Mei's favourite Children's Charities.

AN EVENT NOT TO BE MISSED.

SAVE Your MEMORIES To DVD

from this



Prints and Slides
VHS, BETA,
All Camcorder tapes
8mm, 16mm movie

free pick up
and delivery



Don't let your
memories fade away

PHOTO RESTORATION also available

Call Rob Gateley on 0401 831 715

Email r.gateley@bigpond.com

Celebrating 40 years in the Photo Industry



Pssst Have you heard about 2 Dogs Walking?



DOG WALKING

All dogs benefit from regular walks
The stimulating sights, smells and sounds of the outdoors
After a walk/play and a drink, your dog will be relaxed
and content until you get home.

PET SITTING

In the comfort and security of their own home.
Two Dogs Walking will come to your home and attend
to your pet's needs - walking, feeding, cleaning up,
administering medication or just providing company.

BOUTIQUE HOME ENVIRONMENT

Going away? Not sure about kennels?
Let the fur kids come holiday with us.
All their needs can be catered for.

Call Meg or Rob Gateley
on 5429 5561 or 0401831715

E: twodogswalking@bigpond.com



DEEP CREEK LANDCARE GROUP

Covering Lancefield -

Romsey Districts

On Sunday the 25th May a joint working bee was held with
Lancefield Primary School to clean up the area at the side of
the oval which has a bird hide, native grasses and a wetland,
fencing was also taken down to be replaced. Blackberry
plants and elm sucklings were destroyed. It was an enjoya-
ble morning with parents, students, Landcare and park com-
mittee working together. Students planted some new plants
for understory, lunch was provided by Landcare.



We wish to
thank the
Lancefield Op
Shop for \$500
cheque which
will be used on
projects within
the community.

No Change to meeting dates and times.

Contacts : President: Robin 0428 315 846

Secretary: Ken 0404 886 580

email: ken.allender@bigpond.com

Website : www.deepcreeklandcare.org.au

SAPPHIRE HAIRDRESSING

FOR ALL YOUR FAMILY'S HAIRDRESSING NEEDS

Specialising in all the latest
styles and colour trends

for men, women and children

AFFINAGE
PROFESSIONAL

BIOLAGE

Trading Hours

Tuesday - 9am - 5:30pm

Wednesday - 9am - 5:30pm

Thursday - 9am - 9pm

Friday - 9am - 5:30pm

Saturday - 9am - 3pm

Closed Sunday & Monday

84 MAIN STREET, ROMSEY
PH: 5429 5300

Bolinda Primary School Open Days

Bolinda Primary School has a friendly, welcoming environment. We like to see happy, interested learners who enjoy coming to school and who want to take advantage of the wide range of opportunities available to them. Parents are welcomed and are welcoming, at our school. In partnership with the staff, they make an enormous, appreciated contribution to the learning journey.



We aim to include our students in the learning process by making sure the purpose of learning is clear, giving them opportunities for input, encouraging their opinions, fostering the notion of responsibility for the choices they make and encouraging them to keep improving what they do. We have a strong emphasis on student welfare including school values and encouraging students to take responsibility for their own learning and behaviour. Our classes are under 15 students which allow for individual instruction addressing student needs and explicit teaching.

For a small school we are extremely well resourced with six computers in each classroom, all year 3 - 6 students have their own net-books, six iPads, art room, library, performing arts classroom, physical education storage shed, rebound wall, two sports courts, five electronic whiteboards - one in each learning space, playground, veggie garden, kitchen, chicken coop and walking track. As part of the Australian Government 'Building the Education Revolution', we have two state of the art 21st Century Learning Spaces enhancing both learning and teaching opportunities at our school.

Specialist Programs

As well as a strong emphasis on literacy and numeracy, we also offer Performing Arts, Visual Arts, Physical Education and French. We also offer guitar by an external provider.

Stephanie Alexander Garden Kitchen Program

We are a 'Stephanie Alexander Garden Kitchen Program' school. The program involves students, teachers and parent volunteers growing, cultivating, preparing, cooking and of course eating food from our vegetable garden. We are one of only a few schools in the Macedon Ranges to be accepted into the program.

We welcome visitors to our school and invite you to a tour on our open days on
Wednesday 16th or Thursday 24th July at 10.00 am -12.00 or by appointment at a mutually convenient time by contacting the Principal.

Visit our website www.bolindaps.vic.edu.au

Contact John Mackintosh

Principal

Mullalys Rd Bolinda 3432

Phone 54 285 317 e-mail bolinda.ps@edumail.vic.gov.au



Growing together through Play

Do you need a venue to host your child's Birthday Party?

**The Romsey Playgroup Venue is now available to Hire on Saturdays
for children up to 6 years old for Birthday Parties.**

Venue: Romsey Playgroup - Romsey Community Hub, 98 Main Street, Romsey

Times: Between 9.30am - 12.30pm

Cost: \$80 for 2.5 hours

Age: Up to 6 years old

Enquiries: romseyplaygroup@gmail.com

Terms & Conditions Apply...



Aspect Positive Behaviour Support



Positive Behaviour Support Workshop

For Parents and Carers of Children and Young Adults with Autism Spectrum Disorder
(see eligibility criteria below)

Aspect Victoria is pleased to offer our highly successful, contemporary, evidence-based three (3) day Autism specific Positive Behaviour Support Workshop in the Northern Region of Victoria.

More than 1200 families have participated in Aspect's Positive Behaviour Support workshops across Australia. Post workshop evaluations showed an effectiveness of the workshops, with participants reporting decreases in challenging behaviours and increases in confidence and capacity to support their children and young adults.

When: Monday 28th – Wednesday 30th July 2014
Where: Bendigo Bowls Club
 169-183 Barnard St, Bendigo VIC 3550
Time: 9:30am-2:30pm (9:15am for registration)
Cost: FREE (Tea, coffee & biscuits provided ~ participants to bring own lunch)
Registration: Register online at www.autismspectrum.org.au/registration
 Please note: You may search for this specific workshop location by entering the location into the 'Search Keyword' field

Eligibility to participate in this Workshop:

- » Parents or carers of children and young adults aged between 6 - 25 years, diagnosed with an Autism Spectrum Disorder (ASD)
- » The individual with ASD must be living at home
- » Participating families are encouraged to invite professionals or service providers working with them to attend the workshop

Families participating in this workshop will:

- » Develop an understanding of autism and how an ASD impacts upon learning and behaviour
- » Learn how to be proactive by creating an autism friendly environment at home
- » Learn how to write an autism specific behaviour support plan for one of their child's behaviours
- » Learn how to write a plan to respond confidently when challenging behaviour occurs
- » Learn how to teach new skills to promote their child's independence and quality of life

Enquiries:

Contact Amber Day – Workshop Administrator or Heather Kirkhope – Service Coordinator
 Phone: 03 9377 6600 or email: aday@autismspectrum.org.au

While information and concrete strategies were shared, participants say about Aspect:

"I have learnt very important self-reflection, being able to step back and really look at and examine behaviour, so valuable. I really value the focus on being positive and improving my child's, my own and my family's quality of life. Great workshop – I will highly recommend it to others."

"Fantastic presentation. Very interactive, affirming & capacity building. Ideas not just discussed but taught how to follow through on."
 "Best information session on Autism I have been to. So much clarity about getting to the core behaviour, unpeeling the onion. Enjoyed all the visuals. Thank you so much."

Autism Spectrum Australia (Aspect) ABN 12 000 837 287

Aspect Victoria Suite 2B, Level 2, 12 Hall Street Moonee Ponds VIC 3038 | PO Box 1116 Moonee Ponds VIC 3038 | T 03 9377 8800 W www.autismspectrum.org.au
 Autism Spectrum Australia (Aspect) is Australia's largest not for profit autism specific service provider.

Established in 1988, Aspect provides a wide range of services and support. In 2010 Aspect commenced operation in Victoria.

Aspect has been funded by the Department of Human Services to provide a range of positive behaviour support programs across Victoria.



**COMBINED PROBUS CLUB of
ROMSEY and LANCEFIELD Inc.**
A0042634P
P.O. Box 280,
Romsey, Vic. 3434

For Active Retirees

President: Robert Barry **5428 5194**
Secretary: Jeni Clampit **5429 5480**

**Monthly Meetings are held on the
fourth Thursday at 10am in
St.Mary's Church Hall, Main Street, Romsey.**

Persons interested in this club and wish to have more information please contact the President or Secretary at the above phone numbers.

Next meeting Thursday 24th July at 10am.

Our Guest Speaker will be Lauren Simpson, Tour Coordinator from Organs Coaches.

The planned outing for 16th July will be lunch at Red Beard Bakery in Trentham. Car Pooling to be arranged.

Are you interested in Membership??

We meet once a month and we deal with the normal matters of a club, like correspondence, treasury, and discuss

the last outing we had enjoyed, *and* most important, where we are going to next month, a short tour, a long tour, a lunch somewhere. Our monthly meeting always finishes with morning tea, which is followed by a guest speaker with an interesting topic.



A few of our members enjoy 'Ten Pin Bowling' each fortnight at Watergardens (*definitely non-serious*) followed by lunch at a nearby hotel or club.



We also enjoy a monthly musical/film afternoon at a members home and Friday coffee mornings at a local café.

If you are retired, or close to retiring, come along and join us and learn more about what Probud can offer you to assist you in staying active.

All we want to achieve is a day of enjoyment and friendship.

Please come and have a look at what we do and who we are.

Please check out our website for information about the Romsey & Lancefield Probud Club rprobud.org.au

RIDDELLS CREEK •SAND•SOIL BUILDING SUPPLIES

OPEN 7 DAYS

Mon - Fri 7.30am - 5pm
Sat 7.30am - 4pm
Sun 9.00am - 3pm

For All Your Garden, Hardware & Building Supplies

- ✓ Soils, Mulches & Compost ✓ Pebbles & Toppings
- ✓ Screenings & Sands ✓ Cements & Concrete Mixers
- ✓ Reinforcing Mesh ✓ Oxides & Sealers
- ✓ Sleepers, Treated Pine & Redgum (new & used)
- ✓ Treated Pine Timber ✓ Timber ✓ Decking
- ✓ Concrete Products ✓ Trellis ✓ Swap & Go Gas Bottles
- ✓ Stormwater, Aggie Pipes & Fittings....and much more!
- ✓ Discounted Quarry Products (Bulk Loads)
- ✓ Wide Range Of Bolts & Screws ✓ Redgum Firewood

PH: 5428 6402
 24 Sutherlands Road, Riddells Creek

Macedon Ranges Physiotherapy

Ben Gidley

NEW PHYSIO NOW AVAILABLE
 Bridy White

Specialising in dance injuries, womens health & pregnancy physiotherapy

Romsey Medical Centre
 99 Main Street
 Phone: 5429 5254

Lancefield Country Practice
 17 High Street
 Phone: 5429 1362



TAC . WORKCOVER . DVA
 No Doctors Referral Required
 HICAPS AVAILABLE

www.macedonrangesphysio.com
 e: macedonrangesphysio@hotmail.com

Romsey Primary School Celebrating 150 years in 2015



Grades 1 to 3, 1945—Romsey State School

Are you one of the people in these photos?

Do you know any of the people in these photos?

Do you have other photos similar to this dating back to the early years of the school?

If you answered "yes" to any of these questions, we need to hear from you!

We need photos, memorabilia, stories and recollections of the school from you.

Please contact us on 5429 5099 or email romseyps.150celebrations@romseyps.vic.edu.au



Romsey Primary School students—circa 1950-1952

Lancefield & Romsey
Community Bank® branches



APPLICATIONS OPEN FOR COMMUNITY GRANTS & SPONSORSHIPS

The Lancefield and Romsey Community Bank's annual call for grants and sponsorships for 2014/15 is open.

All Lancefield and Romsey community groups are eligible. If you have not received an application form please contact us.

Applications close:
Wednesday 30th July 2014

For more information please contact

Emily Blades -

marketing@LancefieldRomseyBank.com.au

Or phone 0405 125 156.

FIND AND LIKE US ON FACEBOOK
Lancefield and Romsey Community Bank Branches

Do you eat enough fruit & vegetables?

We all know we should be eating fruit and vegetables daily yet Australian diets are very deficient in these nutrient dense superfoods. Studies done by the ABS in 2011-2012 found that only 5% of Australian adults are consuming the recommended daily intake of fruit and vegetables. Consuming fruit and vegetables not only contributes to better nutrition but assists in preventing health problems such as overweight and obesity, constipation, diverticulitis, diabetes, high blood pressure, stroke and heart disease. Fruit and vegetables are highly nutritious containing vitamins, minerals, enzymes, antioxidants and fibre which are all essential for good health. Adding these nutrient packed foods into your daily diet will help combat fatigue, improve your digestion and boost your immunity. The current recommended daily intake is 2 servings of fruit and 5 servings of vegetables per day. A serving of vegetables is defined as half a cup of cooked vegetables or one cup of salad vegetables.

Some tips to help you consume the RDI for fruit and vegetables;

☐ Do a regular fruit & vegetable shop, so fresh produce is always available in your house. If you don't have time to shop arrange a fruit and vegetable box to be made up weekly so its waiting for you at the shop or have it delivered.

☐ The brighter your meals the healthier they are. Make sure your plate is always colorful

☐ Eat seasonal fruits and vegetables and local produce when possible

☐ Add a green leafy vegetable such as spinach or kale to at least one meal per day

☐ Add variety, try something new every time you visit the fruit shop.

☐ Juice/blend and drink your vegetables. Juices are an easy way to get 1 to 2 servings of F&V into your day without even trying

☐ Always have vegetable sticks chopped up ready to eat in the fridge (celery, carrot, cucumber, zucchini)

Eating more F & V is such an easy way to improve your health and prevent disease. Head to your local fruit shop today and stock up on these amazing gifts from mother nature.

Emilie Chiller

Make Me Healthy-Creating a Healthier You

Family Fun Football Fires Fundraising!

Fun and football will mark six months of recovery following the large grassfires that swept through Macedon Ranges in February.

A fire recovery community football match will take place on 6 July 2014 at Romsey. Organised by Macedon Ranges Shire Council with support from the Victorian Government and local businesses, the event aims to:

- encourage fire-affected residents to take a day away from repairing fire damaged properties to socialise and enjoy themselves with family and neighbours
- provide an opportunity for the whole community to come together & thank everyone that responded to the fires and assisted with recovery
- provide an opportunity for volunteer organisations to fundraise

The football teams – Volunteers versus The Rest of the World - will be made up of players nominated by emergency services, affected communities, and local organisations. Well known comedians, former AFL stars and other celebrities will take to the field or join in as team coaches or game commentators. The game will be broadcast both on site and via local radio station Highlands FM.

This event is free and is open to all residents!

Date: Sunday 6th July

Venue: Romsey Football Ground

Time: Gates open at 12 – game kicks off at 1pm



SPLIT RED GUM FIREWOOD PRICES FOR ROMSEY LANCEFIELD AREA

1 meter \$145*	5 meters \$675*
2 meters \$280*	6 meters \$810*
3 meters 420*	8 meters \$1040*
4 meters \$550*	12 meters \$1500
Local Firewood 5 meters \$575*	
Local Firewood 8 meters \$880*	
Local Firewood 12 meters \$1200*	

*prices include delivery

Pick up is available

PHONE MANNY

0418-570-249

Email woodbloke@bigpond.com



Awards celebrate young people

Macedon Ranges Shire Council is calling for nominations for its annual Youth Awards, which celebrate and recognise the achievements of young people in the shire.

All young people in the Macedon Ranges, along with their families, friends, teachers, neighbours, employers or colleagues, are encouraged to put forward a nomination.

Nominations will be accepted for anyone aged 12-25 years in the Macedon Ranges who has excelled in the arts, sport, at school or in their community.

Young people are such an important part of our community, and a nomination shines a light on both the contributions they make and the individuals who make them.

Nominations close at 5pm on Tuesday 29 July and winners will be announced at the Youth Awards presentation night on Tuesday 26 August in the Kyneton Town Hall.

Award categories and nomination packs can be found on Council's website, mrsc.vic.gov.au/youth or can be picked up from any Council service centre.

Like us on facebook to keep up to date with all Macedon Ranges Shire Council Youth Development news - [facebook.com/MacedonRangesYouth](https://www.facebook.com/MacedonRangesYouth)

Term 3 Youth Space Activities



Romsey, Kyneton and Gisborne Youth Spaces return for Term 3 from 15 July, for young people aged 12-18 years.

What happens in our Youth Spaces? Programs and activities include Master Chef, stop-motion animation, scavenger hunts, games nights, movie marathons, Parkour, Mexican Fiestas and much, much more!

Youth Spaces open weekly during school term as follows:

Gisborne: Thursdays from 4pm-6pm, at Manaaki on Aitken St
Kyneton: Tuesdays from 4pm-6pm, behind the Town Hall on Hutton St
Romsey: Tuesdays from 4.30pm-6.30pm, at the Community Hub on Main St.

Keep an eye out for the Youth Spaces term flier for what's happening and when, or head to [facebook.com/MacedonRangesYouth](https://www.facebook.com/MacedonRangesYouth). You can also contact Mim on 5422 0296 or mgrundy@mrsc.vic.gov.au

Youth Spaces are run by Macedon Ranges Shire Council. They are fully supervised and drug, alcohol and smoke-free.

Essence of
Chinese Medicine



Hannah Sutton
B. App. SC (Human Biology)
B. App. SC (Chinese Medicine)
www.essenceofchinesemedicine.com.au

BOOST IMMUNITY

With cold & flu season in full swing why not bolster your immunity naturally with Chinese Medicine?

Acupuncture and herbal medicine can enhance your immunity and is an excellent form of preventative medicine.

Whenever there is a change in weather the body is often vulnerable to illness. If you are prone to colds & flus or feel like you never really recover from an illness you should consider a "seasonal tune-up".

Lancefield Day Spa Tuesday – 5.30pm to 8.00pm
14 High St, Lancefield Thursday – 9.30am to 8.00pm
Saturday – By Appointment

Phone for an appointment
(03) 5429 1732 / 0401 085 125



Pastor's Parables

Encourage Church - Romsey & Woodend
Office: 7 Mitchell Court Romsey; Ph (03) 5429 6327
Email: encouragechurch@iprimus.com.au
Web: www.encouragechurch.com.au
BE ENCOURAGED!



DID you know

All religions in the world believe we must practice very specific behaviour and follow very specific rules in order to reach their form of heaven. **All of them believe that their "way" is the only way.**

Only Christianity teaches that God loved us enough to make the way **for us**. Only Christianity teaches that God forgives us based on His grace, and He opens His arms to us not because of how good we are or how much we do.

In some ways, Christianity is the opposite of religion.

If religion is about humans reaching up to get to God, Christianity is about God reaching down to rescue us. Think about it this way. All other religions require that you DO certain things in order to make it to their afterlife.

Christianity is the only faith system that believes that God, **has already DONE** what is necessary for His children to reach Him, through Jesus Christ's death AND resurrection. He did it all on our behalf!! That's grace!

Since all religions are different, we have to make a choice. Whichever religion **you choose** will determine your eternity.

If you would like to know more about faith in Jesus please contact Pastor Marilyn or our Church office Ph 5429 6327
We would be happy to help you find true peace and joy in life.

Encourage Church
"Encouraging one another to be ALL that we can be in life and in God".

You are also invited to join us at one of our Sunday Services:

- 10am at 7 Mitchell Court Romsey
- 6pm at Woodend Community Centre

Or one of our fortnightly Life Groups.
Fortnightly Youth events and weekly Children's programs.

We also offer Kidzone Before & After School Care | Vacation Care | 'mainly music' Program

Pastor Marilyn Hunter - "**ENCOURAGE CHURCH**"

Bolinda Primary School Tours

**Bolinda is a small community school
with a dedicated staff, excellent facilities
and small class sizes to assist
student learning.**

Book a tour of the school

with the principal

John Mackintosh on 54 285 317

ROMSEY / LANCEFIELD SENIOR CITIZENS

Meet each Monday.

Come and enjoy lunch, a game of cards, indoor bowls or just a chat with a very friendly group of people. Bus trips arranged each month.

For details, please ring Rae Hooke on 54291602.

Romsey Rag Contributors

Please Note:

Submissions for the October edition of the Romsey Rag must be received no later than Wednesday September 10th. Items received after this date will not appear in the October edition of the Romsey Rag.

Toys Galore at St Mary's Lancefield



Pictured above playing together is Matisse Donellon, Heidi Snow and Chelsea McCarthy

Minibeasts at St Mary's Lancefield

The students in Year 1 and 2 at St Mary's Lancefield are currently learning about 'Minibeasts', with each classroom having their own mini insect enclosure.

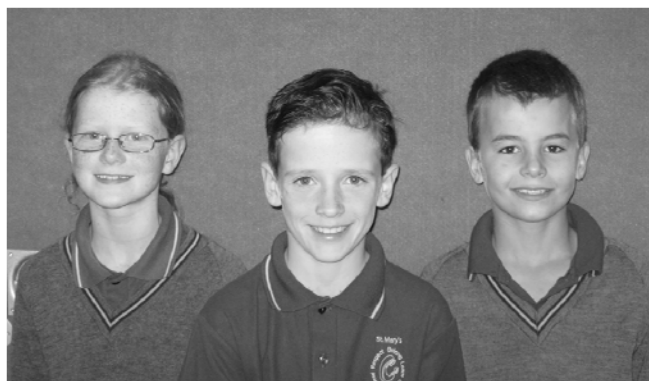


If you look closely you can see Caleb Urquhart has frog in his hand.

Cross Country Winners from St Mary's Lancefield

Three students from St Mary's Lancefield recently competed at the Regional Cross Country event at St Arnard. All three students did a sterling job finishing in the top 12 of the competition, ensuring them a place at the state competition in July.

Pictured below are the three cross country runners from St Mary's Lancefield - Charlotte Brundell, Brody Thrum and Darcy Giles



The Preps at St Mary's have spent Term Two investigating the history of toys and looking at how toys have changed over time. Recently they attended a workshop in the School Hall where they had the opportunity to play with a variety of toys using skills including construction and imagination.



Harry Wilson, Occy Cuthbert and Cate Mahony showed plenty of flare in their 'dress up' costumes.

Land Yacht Race at St Mary's Lancefield

During Term 2 the Year 5/6s investigated how we can create a change, in the way we use energy in our school and local community. As part of their research the students designed and built 'Land Yachts' which could be powered with wind energy.



Darcy Daly is pictured with his speedy Land Yacht.



Kade Ryan and Callum Sankey are enjoying watching the yachts 'sail' by.



Romsey Medical, 99 Main Street, Romsey, 3434.
Lancefield Medical, 20 Chauncey Street, Lancefield, 3435.
(54 295254 754 296147 doctors@romseymedical.com.au

www.romseymedical.com.au

Romsey Medical Opening Hours

Monday to Thursday: 8.15am to 8.00pm

Friday: 8.15am to 6.00pm

Saturday: 8.30am to 1.00pm

Sunday: CLOSED

Lancefield Medical Opening Hours

Monday to Friday: 8.30am – 5.30pm

Saturday: Services through Romsey Medical

Sunday: CLOSED

After Hours Services

Between the hours of 8pm and 8am weekdays and 6pm to 9am weekends and public holidays after hours services **Health Direct** can be contacted on: **1800 022 222**

For urgent attention between 1pm and 6pm on a Saturday and 9am to 6pm on a Sunday please call our doctors direct on: **0419 998 088**

Remember:

Romsey and Lancefield can usually offer you on the day appointments – ring early for flexible appointment options. Bulk billed Quick Clinic appointments are available every weekday at both centres, for urgent/lost repeat prescriptions, re-referrals and some vaccinations.



Romsey Mechanics Institute

PO Box 230

Romsey 3434,

Victoria

Mob; 0458 702 106

ABN; 99 340 024 758

rmibookings@gmail.com

secretaryrmi@gmail.com

Our new doors have been installed, a spot of paint and they will look wonderful. Our thanks to Bruce Ferguson and his team who did such a great job installing the doors and also to the Bendigo Bank whose grant was largely responsible for their purchase and installation.

The Committee of Management has decided to remove the coin operated timers from the institute's heaters. The smaller heaters do not operate properly with this system and we will install a two-hour push-button timer on the larger main hall heater.

Over the past 12 months the Institute has seen a growing number of birthday parties. If you have a birthday coming up you may wish to consider the RMI as a venue.

The Institute and the Romsey Neighbourhood House are busy planning our "Collectables" day for November 9th. If you have a collection of antique, retro or vintage pieces here is your opportunity to show them off. For more information please contact Gail on 0416 028 219.

One of our regular user groups, Cowboys & Angels Dance Academy has been busy raising funds to get their team off to the UK to represent Australia in the World Dance Masters in August. They will be running discos and other events to help raise funds for airfares and accommodation costs.

The CoM would like to hear from any interested members of the community who feel they have time and/or expertise to assist us to manage the RMI. If you would like to help us look after and improve this wonderful piece of Romsey's history please contact the secretary at; secretaryrmi@gmail.com.

The CoM strongly believes that we are here to serve the needs of the communities of Romsey and surrounding districts, so if you have a function coming up please consider the RMI.

Bookings and inquiries can be made at;
rmibookings@gmail.com

STREET PARTY CONNECT

BUILDING COMMUNITY SPIRIT AT THE STREET LEVEL

Would you like to make your street a friendlier, safer and greener place to live & feel a sense of belonging?

With busy, more independent and less localised lives we have fewer chances to bump into people within our community. A street party right outside your door for a day is a great 'excuse to meet' all your neighbours at once to build relationships, enjoy conversations and meet new residents.

Street Parties are a free and great way to get to know your neighbours and build community spirit. As people get to know more people that live around them they find they feel safer, happier and more connected to their community. Communities with a high level of connectedness also tend to have lower crime rates because neighbours look out for one another.

Romsey Neighbourhood House in conjunction with Lancefield Neighbourhood House is developing a "STREET PARTY CONNECT" program to help improve connections in your local neighbourhood. If you are interested in holding a street party this coming Spring/Summer please contact:-

<p>Romsey Neighbourhood House</p> <p>Contact: TBA Phone/Fax: 03 5429 6724 Email: romseyhouse@bigpond.com</p>	<p>Lancefield Neighbourhood House</p> <p>Contact: Vivien Phone/Fax: 03 5429 1214 Email: lancefieldhouse@tpg.com.au</p>
--	---

AS FRIENDSHIPS GROW, SO DO OPPORTUNITIES FOR BORROWING & LENDING

Romsey Toy Library



discover - imagine – play
Located @ Romsey Library

Open Sessions
Wednesday – 3.30pm to 4.30pm
Saturday – 10.00am to 11.00am
Closed for School Holidays

New Special Needs Project

Come & check out our new range of specialised & educational toys for children with special needs. Over \$2,500 spent on a broad range of toys to suit the interests & needs of children of all abilities.

Thank you Macedon Ranges Shire Council & Romsey/Lancefield Community Bendigo Bank for helping fund this initiative

Membership Fees

Family Membership	\$35
Grandparent membership	\$25
Playgroup member discount	\$25

Enquires

Hannah - 0401 085 125 or romseytoylibrary@gmail.com



Gisborne Singers

The Gisborne Singers will present their mid-year concert on Sat 19th July at Holy Cross Primary School, New Gisborne, entitled 'More Music for Pleasure'. As previously, patrons will be sitting at round tables and are asked to bring their own food, refreshments, glasses, crockery and cutlery. The Singers will provide the SHOW!

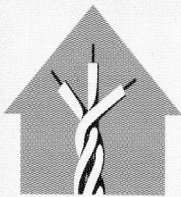
It is very gratifying for the Singers, that once again the Gisborne Gazette is the major sponsor for this production. This gesture is greatly appreciated.

The program includes choral, solo, duo and small group singing and recitations. The evening will run in four brackets with a 20 minute interval between each. It promises to be a fun night with plenty of opportunity for socialising.

Due to the absence overseas of our director, Stephen Brockman, this concert will be directed by Alan Grinton. Doors open at 6.30 p.m. and the show starts at 7p.m. Tickets are on sale now at \$25 each (no Conc.)

For bookings go to our web-site—gisbornesingers.org.au and follow the prompts for bookings. Either individual placings at table or entire tables can be booked on line. Alternatively telephone Robert on 5428 7033.

This show always sells out, so patrons are urged to book early.



Dowell Electrical & Solar

Ray Dowell
Electrician/Solar Designer & Installer

Po Box 357
ROMSEY VIC 3434
M 0409 537 255
F 5429 6181
dowellelectrical@internode.on.net

Rec 23015

St Anne's Catholic Primary School Presents

Autism:

If You Could See What I See

The evening will run in two sections:

6:00pm – 7:00pm – Mini Expo

(Exhibitors include: Amaze, Positive Partnerships, Speech Pathologists, Occupational Therapists, Disability Agencies, Autism Behavioural Intervention Association, Social Skills Programs and many other Autism Therapies, Autism Resources including Books, Visual Aides and many more!)

7:00pm – 9:00pm – Guest Speaker, Dr Richard Eisenmajer

(Richard Eisenmajer (PhD) is a Clinical Psychologist with over 15 years of experience working with people with Autism Spectrum Disorder (ASD). Richard is Director of The ASD Clinic in Kew East and specialises in helping parents, families, teachers and other professionals to understand and support children and adults with ASD.)

When: Tuesday 29th July 2014

Entry: Gold coin donation per person
Light supper provided

Venue: St Anne's Parish Centre
95 Riddell Road, Sunbury VIC 3429

Limited Seats

RSVP by Monday 21st July 2014 to stannesunderstandingautism@gmail.com

For exhibitor information or further queries please email above address or contact the school office on 03 9744 3055



Men's Shed Update

The Shed continues to grow from strength to strength with many new members joining us for Wednesday lunch and conversation. Why not consider joining us from 10:00 am each week?

The conversation is friendly and lively and the BBQ food we serve is always delicious!

At the last Farmer's Market we had a very successful BBQ and wood raffle to raise funds for a various projects. Our thanks go to local suppliers for their generous discounts for the BBQ and in particular to the Many the Wood Bloke for supporting our raffle. The winner was K Butcher of Woodend.

Our 'Kids in Sheds' project continues to be a most enjoyable part of our activities. As part of the Lancefield Primary School Clubs program, a keen group of students have completed their nesting boxes for wild birds. As you can see from the attached photo they are very proud of their efforts.

We are once again constructing the very popular folding picnic table for this year's raffle. Watch out for the tickets when they go on sale –there was great feedback on it from those who participated in last year's major raffle!

For more information or to join us please contact Graham on 0400321131.

Warm regards
Graham Knell
President



Ladies - need an excuse to get out of the House??



Our group aspires to connect women in our rural communities in a warm & welcoming environment. It's a great way to meet new people in the area & have some laughs.

Enquiries: -

Email: info@rrwn.com.au

Tracey (President) 0416 497 623
Natasha (Secretary) 0421 289 137
Hannah (Treasurer) 0401 085 125

WHERE: Sicilian Vespers,
119 Main Street, Romsey
WHEN: Thursday 17th July
TIME: 7.00pm

We meet on the 3rd Thursday of each month to give women an opportunity to take some time out from their busy lives of an evening and stay connected.

Please come join us for a glass of wine & a chat!



Farmers Markets—Dates for July markets

Sat 5th July: Woodend Community Farmers' Market -0487 444 090

Sat 12th July: Kyneton Farmers' Market - 54221 025

Sat 19th July: Riddells Creek Farmers' Market - 0414 913 337

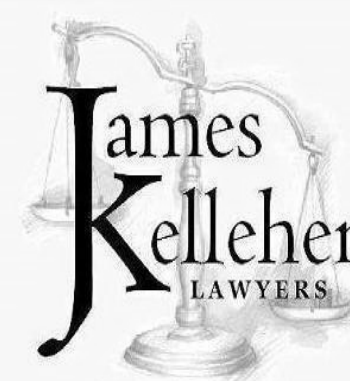
Sat 26th July: Lancefield & District Farmers' Market - 0407 860 320

News:

Congratulations **Riddells Creek Farmers' Market - Winners of the Business Excellence Award for Events & Attractions!** Make sure you get along to the next market & see what all hype is about!

Woodend Community Farmers' Market cooking demonstrations happening during the market.

Lancefield & District Farmers' Market welcomes buskers for the next market, come on all you budding musicians! Please bring your own bags, baskets & trolleys. Friendly dogs are welcome on a leash. Free face-paint for the kids.



'For the right outcomes'

Maureen P. Wiltshire B.A., LL.B.
Masters of Applied Law (Family Law)

75 Main Street, Romsey 3434

Ph. (03) 54295292

www.jameskelleher.com.au

James Kelleher Lawyers has been providing clients with legal expertise for over 25 years. We offer specialised services in many fields including:-

- * Family Law
- * Conveyancing
- * Wills & Probate
- * Business & Commercial matters
- * Litigation and more...



THE ANGLICAN PARISH OF CHRIST CHURCH, LANCEFIELD AND ST. PAUL'S, ROMSEY

JULY 2014 ANXIETY

Charles Dickens wrote *HARD TIMES* and times were certainly hard in 19th Century England and throughout mankind's history hard times have always been there. Hard times have hit many today with job losses particularly, a perceived harsh Federal budget

but with changes which are feared not coming into effect until 2017. By then, who knows?

Jesus' message is, "Don't worry". God knows our material needs and these needs will be met as we put our faith and trust in Him. The Apostle Peter also tells us, "To cast all our cares upon Him for He cares for you." 1 Peter 5:7. This does not mean that times are going to be easy but as the hymn puts it, we are given "strength for today and bright hope for tomorrow."

"An anxious heart weighs a man down." Proverbs 12.25 reminds us.

JUNE IN RETROSPECT

June has been a very full month for all of us. A.M.S. (Anglican Men's Society) welcomed Mr. Scott Hctor-Turner, a member of Romsey C.F.A. to their meeting who gave an enlightening address on Romsey CFA Then and Now, and describing the new station to be built in the next few months. We were saddened by the loss of our dear member, Jan Thomson after a long illness and our love and sympathy goes out to Laurie and family. We rejoiced with Sandy and Jason Webb on the safe arrival of Lucas, a brother for Emilia. We thank all who have supported our

Pie Drive and our Guild Winter Lunch when Rev. Bill Carroll shared his thirty-four years of ministry. Sadly, we farewelled him on June 28th at a special tea at the Lancefield Mechanics Hall, attended not only by our church members but by the many friends he has made during his four years with us. We thank and praise God for his years of ministry with us. We will miss him.!

JULY 2014 DIARY

Thurs. 10th. 8pm. A.M.S. meets Christ Church Hall Lancefield. Enquiries; Tom 5429-6060.

Thurs. 17th. 1.30pm. Romsey Guild meets at Mrs. F. Carter's Monegetta.

Enquiries Glenice Mitchell (Secretary.) 5429-6418.

We await the appointment of Rev. Bill Carroll's replacement.

SUNDAY SERVICES

ST. PAUL'S ROMSEY, Main St. 9am HOLY COMMUNION.
CHRIST CHURCH, LANCEFIELD, Chauncey St.
10.30am HOLY COMMUNION.

=====

"Do not be anxious about anything but in everything by prayer and petition, with thanksgiving, present your requests to God."
Philippians 4:6.

Church Office 5429-1380



CLASSICAL CHAMBER MUSIC

Romsey Primary School enjoys the services of an accomplished performer/piano teacher who runs his own concert series in his mud brick house just 30 minutes from Romsey just out of Broadford. Engaging performers from all over Australia as well as Europe, Peter Hagen is dedicated to providing quality classical music in regional areas. In late June he takes up a recording contract in England with the most recent musician of his concert series, Jane Downer, a busy and acclaimed oboist currently working in England.

A downloadable brochure is on his website
www.peterhagen.com.au on the Broadford Salon page.

Classical Chamber Music near Broadford

Concert Four

Sunday 17 August @ 4.00pm

"Dialogue: The Art of Elegant Conversation"

Elysium Ensemble

Greg Dikmans - baroque flute

Lucinda Moon - baroque violin

Solos and duos for flute and violin

Greg and Lucinda explore the rich and varied repertoire for instrumental solo and duo without bass in rarely performed works by Johann Joachim Quantz, Joseph Bodin de Boismortier, Carl Philipp Emanuel Bach and Johan Helmich Roman.

Greg Dikmans and Lucinda Moon have been working together for over 25 years developing a fruitful collaboration built around an approach to historical performance practice that is characterised by careful scholarship combined with subtle, tasteful and, above all, unpretentious musicianship.

Tickets	Adult	\$38
	Early bird tickets *	\$32
	Plate for one - 5pces	\$8

*Early bird is up to 10 days before concert

Bookings Essential - Limited Seating

<http://www.trybooking.com/ECIO> and

<http://www.trybooking.com/71878>



IS OPEN!!!!

TERM 3 2014 -

Located @ Romsey Library

New Families interested in joining Playgroup,
the first 2 sessions are FREE!!!

Contact Leighann on 0405 507 805 or

email romseyplaygroup@gmail.com for enquiries

"New Session" **MONDAY: 10.30am - 12.30pm** (new time) Birth-18months
"Sign key in & out @ library desk"

TUESDAY: 9.30am-11.30am
Open Session: Birth - Pre Kinder

WEDNESDAY: 9.30am-11.30am
Open Session: Birth - Pre Kinder

THURSDAY: 9.30-11.30am
Open Session: Birth—Pre-Kinder

"New Session" **THURSDAY 2.00pm - 4.00pm** Birth-18months
"Sign key in & out @ library desk"

SATURDAY: 9.30am-11.30am

Open Session: Birth - Pre Kinder "Sign key in & out @ library desk"

Pop into Playgroup and join in the Fun. Liz on Tuesdays, Leighann on Wednesdays and Kaye on Thursdays are available during these sessions. Craft activities will be organised for each session.

Mondays AM, Thursdays PM and Saturdays AM are 'sign in' sessions; get the key from the library front desk. If you would like to co-ordinate one of these session then contact Leighann to organise.

"LIKE" Romsey Playgroup FACEBOOK PAGE

ROMSEY LICENSED POST OFFICE

OFFERS THE
FOLLOWING SERVICES:

**BILL PAYING
FAX SERVICE
PHOTOCOPYING
LAMINATING
OPTUS PRE-PAID
PHONE CARDS
TELSTRA PHONEAWAY
TELSTRA PRE-PAID
PHONE CARDS
PASSPORT APPLICATIONS
OFFICE STATIONERY
CITILINK DAY PASSES
COMPUTER DISKS
COMMONWEALTH,
NATIONAL
& GIROPOST BANKING**



ROMSEY C.W.A.

We meet at the Romsey mechanics Institute. Meetings are held on the 1st Thursday of the month from 10am to 12 noon, at the rear of the Hall or in the Elderly Citizens rooms.

If you do not like meetings and would like to join our craft days on the 3rd Thursday of the month BYO lunch, tea and coffee provided, from 10am to 3pm.

You do not have to be crafty to come—we will teach you! We like to have a day of fun and learn new skills. Please phone before coming as we sometimes have these days at a member's home.

President: Shirley Jones 5428 6280
Vice President: Pat Muddyman 5428 5418
Catering Leader: Pat Muddyman
Treasurer: Susie Jarman 5429 6008
Secretary: Melva Beer 5429 3763
Craft Leader: Melva Beer



Dinosaur images courtesy
of Andrew Plant
www.andrewplant.com

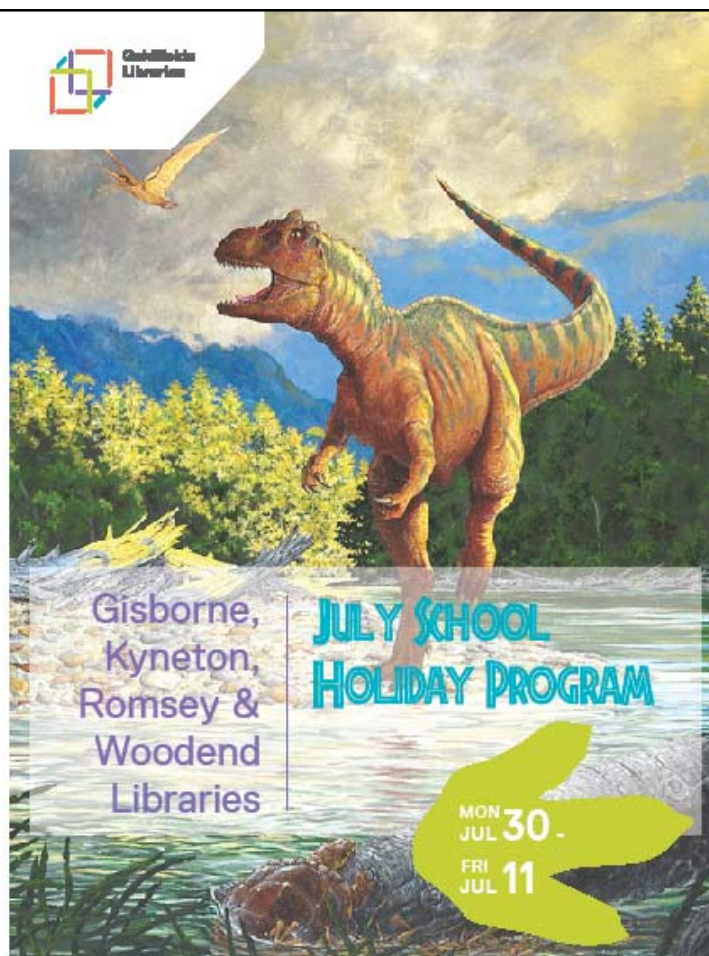
To book for any of these
sessions please contact
the Library:

Gisborne
Hamilton Street
p: 5428 3062
e: gisborne@ncgrl.vic.gov.au
Mon, Wed, Thu, Fri 9am - 5:30pm
Tue 9am - 6pm
Sat 9:30am - 12:30pm

Kyneton
3 Baynton Street
p: 5422 1365
e: kyneton@ncgrl.vic.gov.au
Mon, Tue, Wed, Fri 9:30 - 5pm
Thu 9:30am - 6pm
Sat 9:30am - 12:30pm

Romsey
98 Main Street
p: 5429 3086
e: romsey@ncgrl.vic.gov.au
Mon, Tue, Wed, Fri 9:30am - 5pm
Thu 9:30am - 6pm
Sat 9:30am - 12:30pm

Woodend
Cnr High & Forest Streets
p: 5427 2074
e: woodend@ncgrl.vic.gov.au
Mon, Tue, Thu, Fri 9:30am - 5pm
Wed 9:30am - 6pm
Sat 9:30am - 12:30pm



www.ncgrl.vic.gov.au



www.ncgrl.vic.gov.au



Romsey Uniting Church

25 Pohlman Street, Romsey. 3434

Church Council Chairperson: Noel Shaw - 5429 5509

Secretary: Jeni Clampit - 5429 5480

You are most welcome to come to the Romsey Uniting Church Services and share in fellowship and worship

News from the Romsey Uniting Church:

Annual Winter Luncheon on Wednesday June 11th, 2014.

We had a very successful day. The weather was good and we had plenty of good home made food.

Our Guest Speaker, Julie Webber from the Children First Foundation was very interesting and inspiring. She gave us an insight into the lives of the children from overseas who suffer very tragic disabilities and are brought to Australia for corrective surgery. Everyone enjoyed the day.

Meditation

Luke 5: 27.

'After this, Jesus went out and saw a tax collector by the name of Levi sitting by his tax booth. "Follow me," Jesus said to him, and Levi got up, left everything and followed him.'

Take a few moments to imagine the scene.

Picture yourself among the disciples walking with Jesus. The customs house is on the edge of the busy main road, a trade route from Damascus through Capernaum to the coast and all the way down to Egypt.

It's a warm day. Outside the house is a chaos of carts and wagons carrying grain, wine, olive oil. A confusion of horses, donkeys and mules kick up the dust, their drivers shouting and quarrelling and sweating in the sun.

We follow Jesus as he walks through the crowd, brushing away the flies, ignoring the smells, watching where he puts his feet.

He goes through the gate in the high wall, past the guards armed against robbers, and enters the courtyard. It too is crowded with reluctant tax payers. The tables are covered with papyrus scrolls and wax tablets for note taking, invoices, and bills.

Businessmen sit and argue with accountants, pleading poverty.

"It's been a bad year for olive oil.... I can't afford to pay." Poor men ask for mercy, not even expecting justice.

Levi sits in the main room. Jesus stands quietly in front of the table, but Levi continues to write, head down. He's a bureaucrat enjoying the taste of power in the ten second wait. Then he looks up at Jesus and as their eyes meet there is some strange compelling transaction between them. *"Come,"* says Jesus and as Levi responds to the invitation, pushes back his chair and stands, he becomes Matthew, "Gift of the Lord".

Matthew was a tough, shrewd and cynical tax collector, a man willing to accept deep unpopularity in his pursuit of wealth. I wonder why he gave it all up to follow Jesus. It wasn't just a weekend adventure, but a deep commitment involving his whole life. Perhaps it was the fact that Jesus, this new teacher and miracle worker who was beginning to attract crowds to hear him, was willing to take him as a friend, accept him as he was. Jesus made no accusations, no recriminations. Matthew wasn't used to that.

Jesus gave him a simple invitation, and offered it with love.

"Follow me. Come as you are." Centuries before, Moses reminded his people of the way God had freed them from slavery in Egypt. He told them that it wasn't because they were more in number that the Lord chose them but because he loved them (Deuteronomy 7:7) Jesus was saying a similar thing to Matthew.

We can all build that into our understanding. It's not because we're better, more intelligent, harder working or even more enthusiastic that the Lord chooses us, but because he loves us. It's a plain unconditional fact.

Matthew deserved nothing. His life-style had made him unacceptable to most people but that wasn't the point. Jesus offered him and offers us unconditional love.

It has been written – *"We need the courage to accept that we are accepted in spite of being unacceptable."*

God welcomes us, not because of anything we've done or are, but because he loves us. That's the truth and we can take it or leave it. And even if we choose to leave it he still loves us.

(Written by Eddie Askew. (Deceased)

(Used by permission - Leprosy Mission International.).

Services during July, 2014

6th	9am	Worship Service led by the Worship Team
13 th	9am.	Worship Service & Holy Communion
20 th	9am	Worship Service visiting Preacher
27 th	9am	Worship Service visiting Preacher

Other activities during June

2 nd	7.30pm	Pastoral Care Committee
9 th	1.30pm.	Uniting Church Adult Fellowship.
		Mrs. Errol Gray will speak on her experiences in Botswana.



Bolinda & Monegeetta News

AND THE WEATHER:

147pts for May (another less-than-average-rainfall month) and the pleasant autumn weather continues. We've had some glorious autumn days - frosty mornings giving way to mild sunny days with just the right nip in the air to keep you moving. The first jonquils and snowdrops are out and the last roses are finishing; gardening in our wonderful cool temperate climate really is a year-round joy. The perfume of the osmanthus fills the air, and the lovely scented flowers of winter are just budding. Plenty of lovely flowers on the Sasanqua camellias and so much vibrant color on the Salvias. The larger Bethelli salvia has been a mass of bright pink blooms this year and the other sages in the deep blues, reds and mauves have been a delight. It is such a pleasure to see the native birds enjoying the nectar feast salvias provide.

HALL COMMITTEE: We had to cancel our proposed dinner – but it will come up later, so watch for it!

HISTORY: From the Minutes Book. That hard-working committee was pretty busy in 1918, too. Minutes for July tell of a working bee to erect a fence around the trees and to plant two more trees, which the Secretary was 'instructed to order'. The same meeting arranged for a dance to be held in August, proceeds to be shared between Riddell Red Cross and the Bolinda Mechanics Institute. And the Secretary to engage musicians and see to advertising. The following meeting, August 29th, after the dance) directed a 'Plain and Fancy Dress Ball to be held in September' – and the printing of 100 tickets, etc, to be left in guess who's hands?! Poor secretary! However, the committee generously contributed 2/- each for prizes. And there was real diplomacy employed here – it was carried that three ladies be appointed to judge costumes – 'one lady from Riddell, one from Bolinda or Monegeetta and one from Romsey'. Three members then nominated appropriate ladies (that could have led to problems.) And the next meeting, December 12th, again directed that a dance be held on December 30th. Three meetings, three dances (all suggested by different members) so it is clear that the Hall was a busy community venue. (PS You might have noticed the typing error last month – June 1914 was the entry; not June 2014 as it read.)

BOLINDA HALL (Melways 610 J9; cnr Mullaly's and Melb-Lancefield Road): Don't forget our community hall is available for hire at very reasonable rates. We want to see it used. That's why it was built! Great for adult or children's parties with lots of safe outdoor space available. Excellent for corporate functions, with DVD/TV/data projection available.

BOL-DARRA (Bolinda-Darraweit) GARDEN CLUB:

We had a great and informative time at Bamboo Creations in Riddell for our last meeting. Lots of different bamboos, of different sizes, colours and other attributes were noted in our 'walk and talk' around the plantings. Interesting to note that most bamboos were 'clumping' varieties – ie. they don't spread compulsively and attempt to take over your garden. Loved the range of sizes, from around 60cm to giants of 12m. And the names – Ghost, Chinese Goddess, Mexican Weeping, Giant Buddha's Belly. Bamboo produce was so interesting; clothing etc, was almost of a silky texture, and, according to John who bought socks, super comfortable.

This month, June, sees us off to Ballarat to visit the Botanic Gardens, and after lunching in Ballarat, off to visit Lambley Nursery. This will be a morning start for us, so that we can enjoy the day and get back in time to feed animals, etc.

You are always welcome to join us. We generally meet on the last Saturday of the month at Bolinda Hall at 1:30 for a chat and brief discussion session...and then we move off on our garden visit about 2:00. (Phone us first, if you haven't been before; we sometimes start earlier)

PEOPLE OF THE MONTH:

It is great to be able to introduce a Bolinda family this month – Jenny and Ron Campbell who live right on the Bolinda side of the Bolinda-Darraweit boundary. They are ex-Sydneyites gradually becoming acclimatised to a more invigorating climate. They had a lovely beachfront lifestyle in Sydney, but daughter Kate, son-in-law Doyle and wonderful grandkids Kody and Jessie were in Victoria, so they made the move south, to better climes, purchasing their lovely property around 2008. Kate and Doyle have set up a world class Arabian Horse Stud (look it up - 'Future Farms'). The breeding and training that has gone into those beautiful horses is a pleasure to see – and you can do just that at their open day around the 1st of December each year, where the horses delight to entertain local, interstate and overseas visitors and buyers. Kody and Jesssie, grandchildren, are accomplished riders and handlers themselves and excel at shows such as the Royal Melbourne. The families live in separate houses on the property, but of course with lots of interaction. It is not hard to see where the love of horses – and indeed, all animals – comes from. Visit Jenny and Ron and you are given a riotous welcome by dogs Bill, Mollie (a blind old 14yo) and raucous Louis (rescued via an animal shelter when the 'owner' who had inherited him rang and said, 'This dog has half an hour to live unless you come and get it...'. Cost around \$400, but cheap when you see the love he lavishes on all and sundry.) Love the alpacas – Serendipity and JoJo; all was well there until baby Peggy Sue came along and jealousy broke out. Now when Ron tries to admire the baby alpaca he gets spat at! More individuals inhabit the small dam paddock (which has a very successful 'fox light' – intermittent, to deter foxes) where Romulus and Remus (alpacas) live with geese and ducks, etc. Goats Lady Di and young Harry (rescued, along with Bella, Betty and Bonnie from abattoirs for around \$150.) And there are four spoilt sheep and chooks, guinea fowl, etc. Are you getting the impression it would be a really good move to come back in the next life, as an animal belonging to Jenny and Ron? Ron tours the property in his golf buggy to feed the menagerie and usually there are other people and/or animals piled on with the animal food. But there is still time to help others. Jenny has been a regular volunteer for BlazeAid, helping cook meals – even though she is recovering from major health problems. She also inaugurated the very successful Bolinda Pet Show at last year's Bolinda Spring Fair. It's a great family to have in our district!!

BUT – I CAN'T FINISH WITHOUT A MENTION OF THE CONTINUING GREAT WORK THAT BLAZE AID VOLUNTEERS ARE DOING TO CHANGE THE LIVES AND FORTUNES OF PEOPLE IN THE FIRE-AFFECTED AREAS OF DARRAWEIT GUIM, SPRINGFIELD, ROMSEY, RIDDELL, GISBORNE, ETC.

- Work will be winding down in mid July; BlazeAid tries to take a break between August and January.
- This might be your last chance to volunteer in this area.
- Volunteer work goes on 7 days a week. You only need to contribute 1 day or part of 1 meal to realise what a great initiative this is.
- There is a strong 'family' culture; we're in this together and especially pertinent for a Christian country, we are TREATING OTHERS AS WE WOULD LIKE TO BE TREATED.
- There is no government funding; charities and foundations are pleased to contribute without being asked as the work and benefits are obvious. No hierarchy – just Rhonda and Kevin Butler who set it up and are so busy and committed to visiting and encouraging others – and without payment.
- If you would like to contribute just part of an evening meal (eg prepare carrots, or mashed potatoes, or greens, or a soup, or sweets, etc, we can use your help on the Bolinda Community team. Just give us a call on 0415 256 911.

'Bye for now John and Ruth Green 54 285 347; 0415 256 911; jandrgreen@hotmail.com

Clothing Alterations

- hems
- zips and buttons
- repairs
-and more

By appointment only



Phone
0439977909

Email catherineneedham@outlook.com



Kim's Mowing

onedriver@bigpond.com

Kim Goldsworthy

Mowing / Edging
Branch trimming
Rubbish removal

Call for a Quote
0416 930 252



Term 3 Program 2014

Romsey Neighbourhood House Inc.
Office: Mon, Wed, Fri 10am-1pm
96-100 Main Road Romsey, Vic 3434

Email: romseyhouse@bigpond.com

PH/fax: 03) 54 296 724

What's on Offer this term?

MORNING Tea GROUP

Come along on Friday the 17th of July and the 22nd of August.
Tea, coffee, morning tea and great company provided. Come and meet with others in your community

.Reiki: (Mondays 11 am-3pm) \$10 per 45min session. Bookings 54296724.

Yoga: (Mondays 7pm-8:30pm)\$15 per class when paid in full at the commencement of the term.\$20 casual rate. Enquires: Leisa Kirk on 0408934656.

Yoga: (Thursdays 7pm-8:30pm)\$15 per class when term is paid before end of week 1.\$18 casual rate. Enquires: Lisa Moor on 0448345338.

Gentle Exercise: (Mondays 10am-11am)\$8 per class. It's fun and tailored to meet the abilities of each participant! May assist with mobility, balance, bladder control and joint pain. Chair based exercises available. Enquires: Jan on 54 281 223 or 0412 219 900. Join after class for a cuppa!

Tai Chi: (Tuesdays 1pm-2pm)\$10 per class. Come along and enjoy the energising benefits of Tai Chi. Enquires: Jan on 54 281 223 or 042 21 9900.

Art Classes for Children: (Tuesdays and Wednesdays 3:45pm-4:45pm)\$80 for a ten week term. Weekly classes for children. Bring your own materials. Booking essential. Contact: Tanya on 0400 0530829.

Craft Group: (Tuesdays 12pm-3:30pm)\$ Gold Coin. Bring along your latest project and craft away in the company of others and maybe pick up a new skill or two! Contact 54296724

Art Group: (Fridays 7:30pm -9:30pm)\$ Gold coin .Do you love Art? Then whatever your medium is bring it along to this social group and create!..... And talk art of course. Enquires: Dot on. 0419 547 064

Italian lessons: (Thursday 10:30 to 11:30am) \$160 for 8 week course plus \$43 for the book. Learn Italian with a tutor passionate about all things Italian. Contact Anita on 54270262 or 0447249709. Commencing 17th July

Beginners Pilates: (Thursday 10 -11am) \$15 per class or 10%discount if Term Fees are paid in full at the commencement of the term. Contact Trish on 0411447392

German Conversation Group: (3rd Monday 11:30am -1:30pm). \$Gold coin. Come together once a month to enjoy and practice basic conversation, have fun and share a cuppa.

Garden Club:(3rd Tuesday)\$2 per meeting. This vibrant club visits gardens and nurseries, shares gardening knowledge, swaps cuttings, and assists members with gardening dilemmas! Enquires: Allan on 5429 5427 or John on 5429 5990

Broadband for Seniors of all Ages:(Gov' Funded) Available during house opening hours. A booking can be made with a mentor to assist you with this self paced program about computers..... OR... become a mentor yourself and enjoy introducing others to the wonderful world of computers.

Candle Making 2nd Aug and 6th Sept 8.30am till 1pm both days. Kids over 12 years also welcome with parent, \$69 pp. Take home candles & notes. Contact the House for details. Book early for this one. Light up your life!

Bus Trip: 13th June \$10 .Take the stress out of shopping and travel with friends and community members by bus to Watergardens. The Bus leaves from Romsey Neighbourhood House at 9:45 am. Bookings essential, seats limited.: 54 296 724

WHOLE TOWN GARAGE SALE SATURDAY THE 13TH OF SEPTEMBER

It's time to gather together all those goods that can be sold on, reused and recycled. To participate in the RNH whole town Garage Sale Book on: 54296724 Cost \$5

Collectables Fair November 9th.

In partnership with the Romsey Mechanics Hall, RNH is planning a Collectables fair . If you would like to book a site to display your collection contact Gail on 540293833 or 0426028219. Please note bookings will also be available for item appraisals. All monies raised will go towards ongoing restoration needs of the grand Romsey Mechanics Hall.

The "STREET CONNECT" Project

Romsey Neighbourhood House is currently involved in developing in Partnership with Lancefield Neighbourhood House and other community groups a "STREET CONNECT" program. This is about getting back to basics, getting to know your neighbours and living in a collaborative, connected, supportive and strong community.

If you would like to know more contact Viv on 54292 337 or Hannah on 0401085125

Romsey & Lancefield Districts Historical Society Inc.



P.O. Box 101

E-mail: lancefieldcourthouse@gmail.com

From the Cottage

We enjoyed a great day on Monday, 9th June (long weekend) when history and garden lovers got together with two local experts, Greg Boldiston and John Dettman, and toured the garden, identifying plants and reviewing the garden set-up. We had a wide range of visitors from far afield, as well as locals, who enjoyed touring the grounds and the cottage and enjoying a soup'n'sandwich'n slice lunch. Many plants were purchased from the Cottage's own stall and from the range of rare plants that Greg had bought along. It is a delight to see the charm the Cottage and garden exerts over visitors!

Records from the Historical Society's Courthouse Files (unfortunately, Cottage Plans are missing from the Cottage) show an excellent plan for the proposed plantings for the Cottage and it seems much of this plan was carried out. However, many areas have become overgrown, seedlings and suckers have shot up and some garden 'thugs', especially perennials, have far exceeded their boundaries. So it is proposed to remove lots of this 'dead wood', itemize and revive existing plantings and add new, easy maintenance plants (still within the historic cottage concept) to enhance some areas.

Both John and Greg donated plants – and planted them – delighting in the wonderful dark, friable soil in the garden. Among other plants, Greg planted Japanese anemones, primroses etc., in a sheltered area on the west corner and John planted a maple (east) and assorted bulbs along the west fence. The west fence has been planted with Clematis nepaulensis (winter flowering, summer deciduous) and Ornamental grapevine (winter deciduous, summer flowering and autumn colour) so this should be a lovely feature all year round.

Thanks to Yvonne, Brenda, Wendy, Robyn and Shirley as well as our experts, for a great day. Visitors from as far afield as Cranbourne, Craigieburn, Lilydale, enjoyed the day, went home with great plant bargains and are looking forward to continuing an association with the Cottage. We'd love to have more local people, who enjoy working together as a team, to join us! If you are interested in History, 'Old Wares', Gardens, Local Events then please join us.

WINTER LUNCHEON 22 July 2014

Our Guest Speaker will be Dr. Paul Carter of Lancefield Country Practice and author of the book 'Hale & Hearty'. Venue is The Supper Room at the Lancefield Mechanics Institute, Time 12 Noon. Cost \$10.00
If possible RSVP 0402248540 Shirley by 15th July

History Week will be celebrated at the Lancefield Courthouse on 3rd August between 10am and 4pm.
Please come and visit our Archives.

prime exercise physiology

Clinical Exercise and Health Services

Sarah Holmes

Accredited Exercise Physiologist

**Chronic Disease Management
& Prevention - Injury Rehabilitation –
Weight Management
Health, Fitness & Performance**

***CLINICAL EXERCISE SESSIONS
AVAILABLE SOON***

TAC, Medicare, WorkCover, DVA

Romsey Medical Centre

99 Main St Romsey

Phone: 5429 5254

E: info@primeep.com.au

F: (03) 86921079

We're
turning **1**

procare
support services

BRIDGING THE GAP IN HEALTHCARE

Our local business offers personalised private mobile healthcare support to assist our clients in maintaining their independence in their own home and community. We are there when family and friends can't be.

For more information about the services we offer, please call or visit our website.

procaresupport.com.au
1300 783 765



It's not just a home loan. It's the start of something bigger.

A home loan isn't just a set of numbers. It's bigger than that. It's a place to raise your family, the community you're going to be part of.

At Lancefield and Romsey **Community Bank®** branches we know how important a home loan is. That's why we go out of our way to deliver great deals on home loan tailored to suit your needs.

If you're refinancing or buying a new home or investment property you can save up to 0.7%pa off the standard variable home loan rate. And when you do more of your banking with us, you'll receive even better value, reduced fees and added flexibility.

Drop into your nearest branch at 20A High St Lancefield - 5429 1977 or 1/112 Main St Romsey 5429 5526 to find out more.



Rod Browning
Senior Branch Manager



bendigobank.com.au

Lancefield and Romsey **Community Bank®** branches

All loans are subject to Bendigo Bank's normal lending criteria. Fees, charges, terms and conditions apply. Bendigo and Adelaide Bank Limited, ABN 11 068 040 178 AFSL/Australian Credit Licence 237879. 5472858 (213882_v6) (16/06/2014)



St. Mary's Parish - Lancefield & Romsey
27-29 Chauncey St, Lancefield &
85 Main Rd, Romsey

Parish Priest:		
Fr. Arnold Heredia	Presbytery:	5429 2130
Pastoral Associate:		
Mrs. Joanne Reuther	Presbytery:	5429 2130
School Principal:		
Mr. Anthony Falls	St. Mary's Primary School	5429 1359



MASS TIMES

Saturday:

6.00 p.m. Lancefield

1st & 3rd Sunday of the month:

8.00 a.m. Lancefield and 10.00 a.m. Romsey

2nd, 4th & 5th Sunday of the month:

8.00 a.m. Romsey and 10.00 a.m. Lancefield

RECONCILIATION

Saturdays 9.45am Romsey & 5.45pm Lancefield.

BAPTISMS

February, April, June, August, October, December.

For more information, please phone 5429 2130.

REGULAR EVENTS

SVDP Drop-In: First Thursday of each month, 10.30 a.m. to 4.00 p.m., St. Mary's Church Hall, Romsey. All welcome to come for a game of cards/chat and free lunch.

BINGO: There will be no Bingo until September 4th 2014.

Are you searching for a way to meet your spiritual needs?

Have you ever thought:

What am I searching for in life?

Am I satisfied with my life?

Where am I going in my life?

What is the purpose of my life?

If you've asked any of these questions, then this invitation is for you.

RCIA (Rite of Christian Initiation for Adults) is a journey that begins with the stirring of faith and curiosity within one's heart and leads to learning about God, the Holy Scriptures, and the Catholic experience.

Who should attend RCIA?

Everyone's starting point on the journey to becoming a Catholic may differ. The RCIA journey is for individuals who:

- Have never been baptised as Christians, or
- Who have been baptised in another Christian tradition and are now interested in the Catholic Faith, or
- Who were baptised in the Catholic tradition but have never received any other sacraments, or
- Are confirmed Catholics who would like to learn about their faith.

If this is for you or anyone you know, please contact Joanne Reuther at St. Mary's Presbytery on 54292130 or email jreuther@smlancefield.catholic.edu.au

All enquiries will be treated in confidence and your details will not be given to any other person or organisation.

O'CALLAGHAN BROS

FIREWOOD SUPPLIES

28 Sauer Road, New Gisborne

SPLIT REDGUM FIREWOOD

YARD PICKUP BY WEIGHT

**FREE DELIVERY
BY WEIGHT OR METRE**

**SMALL TO LARGE LOADS
AVAILABLE**

AVAILABLE 7 DAYS PER WEEK

**(03)54281955
0488957090**

**ROMSEY-LANCEFIELD & DISTRICT
AMBULANCE AUXILIARY PRESENT:
AN**

OLDE TIME MOVIE NIGHT

**AT LANCEFIELD
MECHANICS INSTITUTE
FRIDAY 1ST AUGUST 7PM**

**ADULTS \$10.00
CHILDREN \$5.00
DELICIOUS SUPPER INCLUDED
TICKETS AT THE DOOR**

**CONTACT HELEN RICHARDSON
54296369**